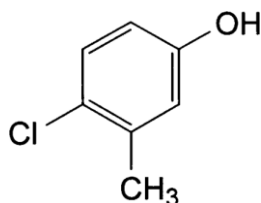


SALES SPECIFICATION

PRODUCT

Chlorocresol EP/BP

[59-50-7]



CHARACTERISTICS

A white crystalline powder or colourless or almost colourless crystals, slightly soluble in water, very soluble in alcohol, freely soluble in ether and in fatty oils. It dissolves in solutions of alkali hydroxides.

TEST	SPECIFICATION
Content	98.0% - 101.0% of C ₇ H ₇ ClO
Identification	Complies with EP/BP tests
Melting Point	64 ⁰ – 67 ⁰ C
Appearance of Solution	The solution is clear and not more intensely coloured than reference solution BY ₆
Acidity	Not more than 0.2ml of 0.01M NaOH is required to produce a pure yellow colour
Related Substances	Complies with EP/BP test
Non-volatile matter	Not more than 0.1%

STORAGE

Should be kept in a well-closed container, protected from light.

PRODUCT NAMED ABOVE COMPLIES WITH THE SPECIFICATION OF EP3/BP1998.